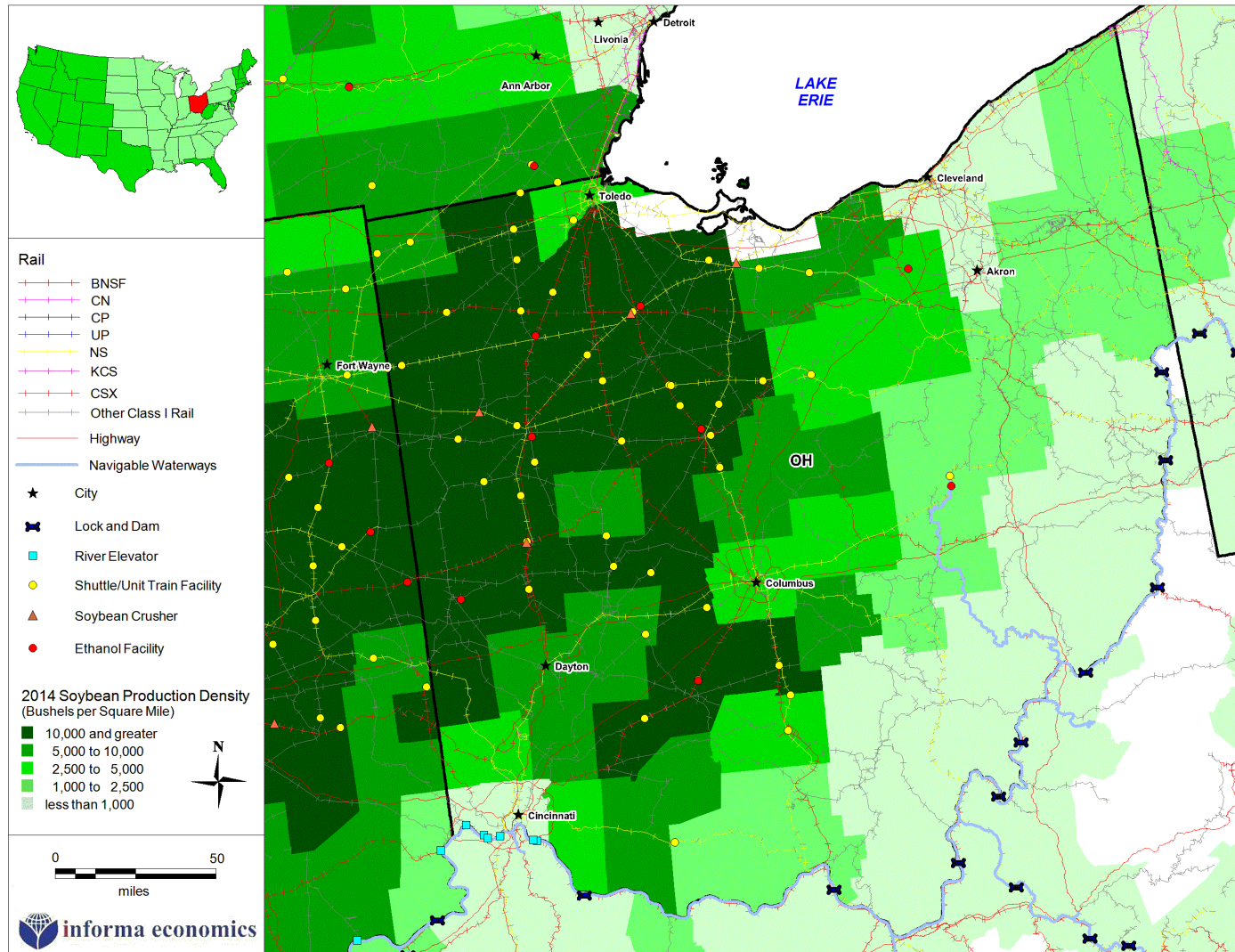




SOY TRANSPORTATION COALITION

FARM TO MARKET: A SOYBEAN'S JOURNEY

OHIO



Production

- Soybean production mostly in the north western portion of the state, with production densities highest in this region of the state.
- Ohio is a contributor of dairy cattle, hogs, and turkeys to U.S. production.

Infrastructure

- Ohio has 5,288 miles of rail lines, 1,574 miles of interstate, and 123,297 miles of roadways.
- Ohio has 46 shuttle facilities, 4 soybean crush facilities, 8 ethanol facilities, 384 grain elevators, and 5 river elevators.

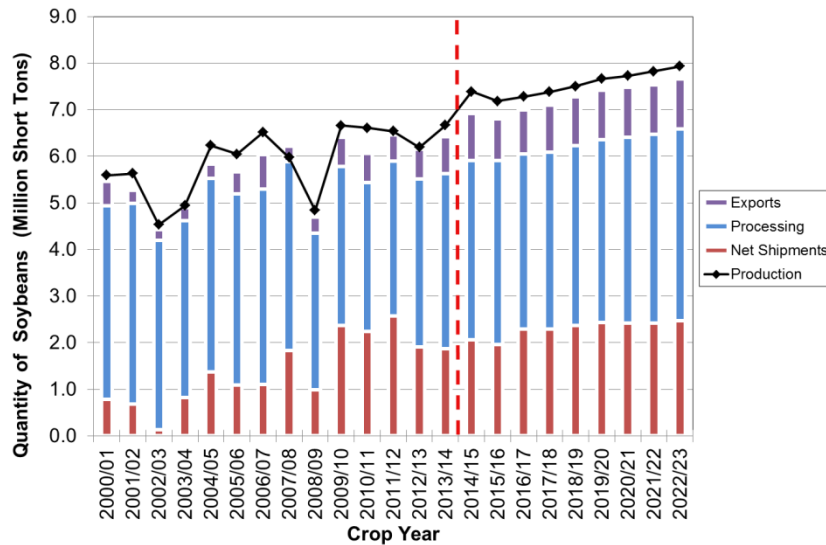


SOY TRANSPORTATION COALITION

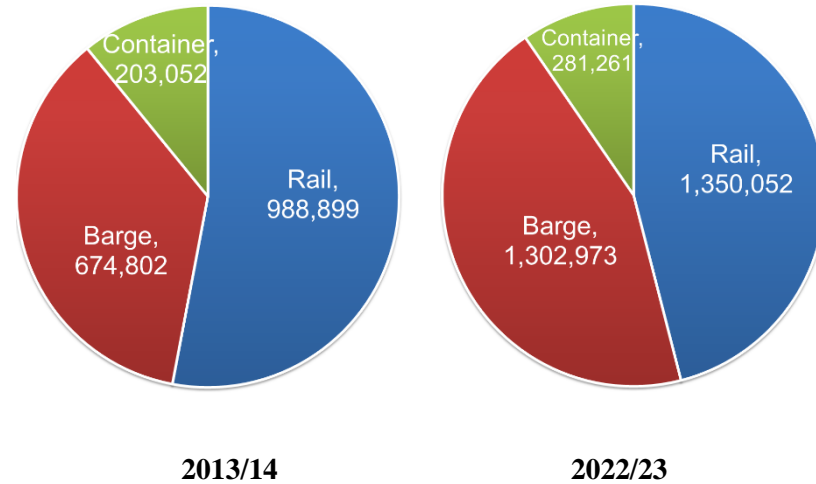
FARM TO MARKET: A SOYBEAN'S JOURNEY

OHIO

Soybean Surplus and Deficit Outlook



Soybean Movements by Mode (Short Tons)



Agricultural Infrastructure: Crush, Ethanol Facilities, Livestock Processing, and Grain Storage

Facility Type	# of Facilities	Capacity/Size
Soybean Crushers	4	10,138 MT/Day
Ethanol Facility (operating)	8	525 MGY
Federally Inspected Livestock Slaughter/Processing Facilities	158	n/a
State Inspected Livestock Slaughter/Processing Facilities	216	n/a
Grain Elevators*	384	438,671 Thous. Bu. Storage
Shuttle Elevators	46	163,051 Thous. Bu. Storage
River Elevators	5	4,516 Thous. Bu. Storage

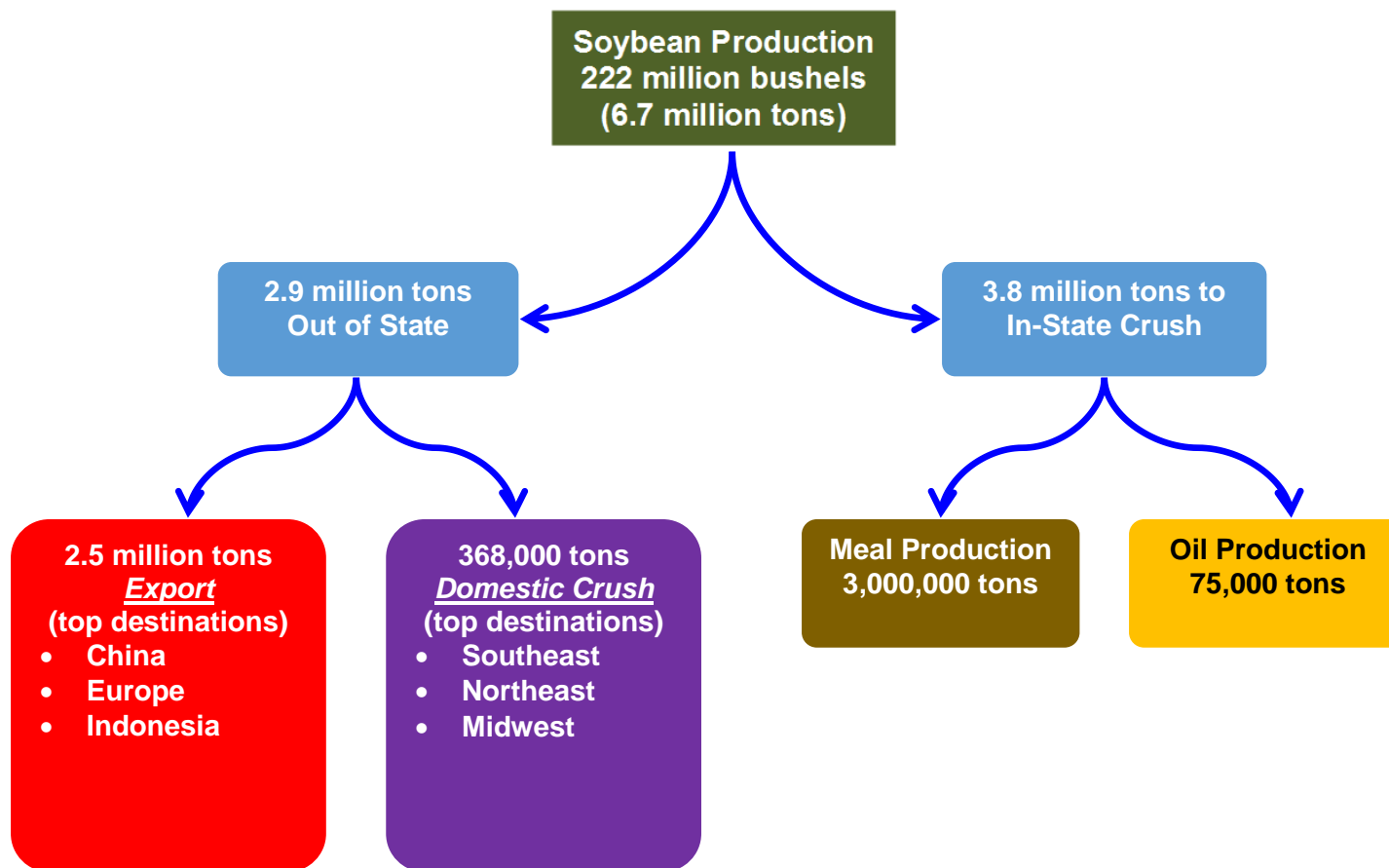
* Shuttle and river elevators are included in the list of grain elevators.



SOY TRANSPORTATION COALITION

FARM TO MARKET: A SOYBEAN'S JOURNEY

OHIO FLOWCHART OF SOYBEAN MOVEMENTS (2013/14)

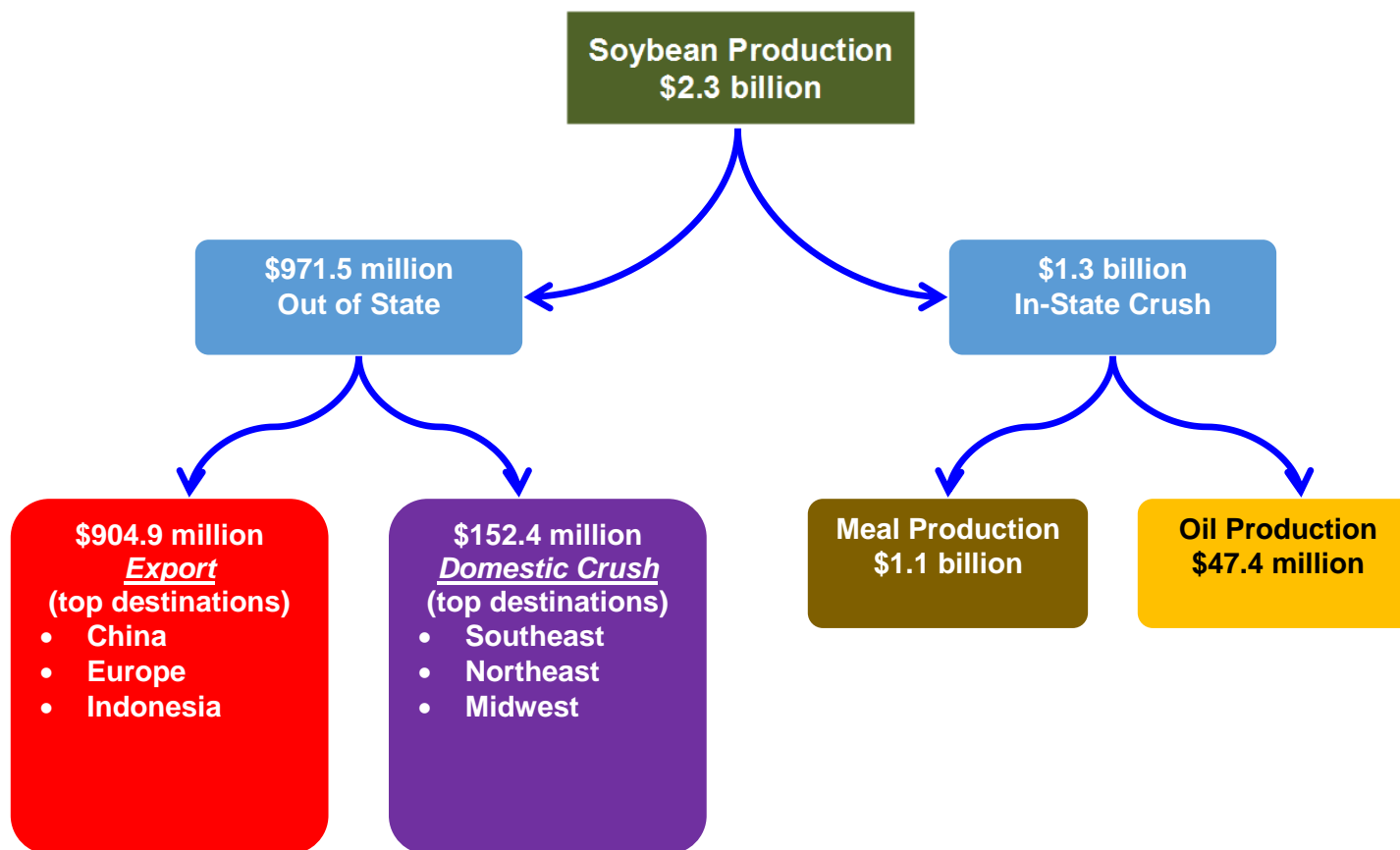




SOY TRANSPORTATION COALITION

FARM TO MARKET: A SOYBEAN'S JOURNEY

OHIO FLOWCHART OF SOYBEAN VALUE (2013/14)





SOY TRANSPORTATION COALITION

FARM TO MARKET: A SOYBEAN'S JOURNEY

Ohio Animal Outlook

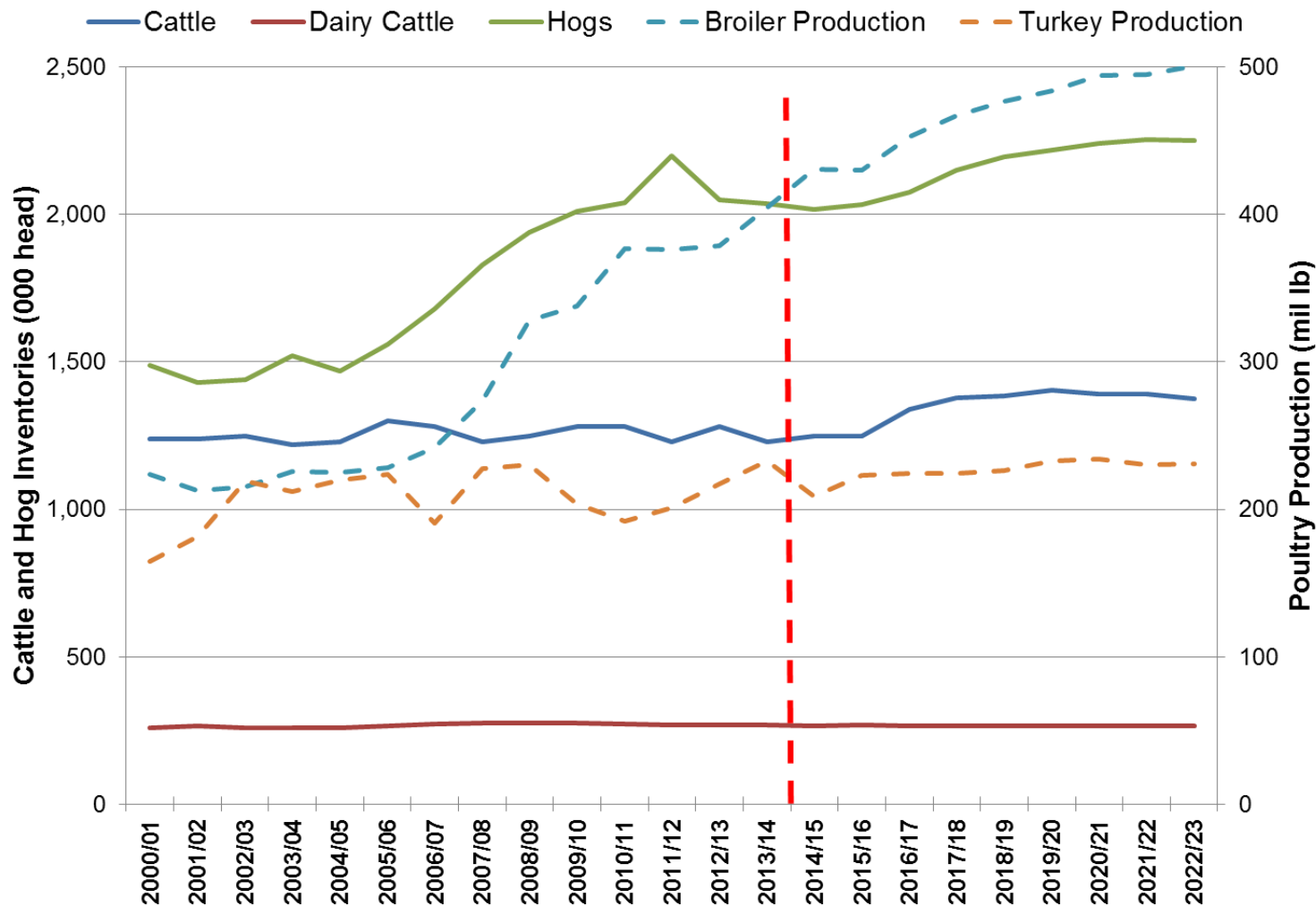
- Hog inventories are expected to increase 11%, from 2 million head in 2013/14 to 2.3 million head in 2022/23. Currently, the Ohio hog herd represents 3% of total U.S. hog inventories.
- Cattle inventories in Ohio are expected to expand 12% in upcoming years, from 1.2 million head in 2013/14 to 1.4 million by 2022/23. Dairy cattle inventories, on the other hand, are expected to contract 2%, from 270 thousand head in 2013/14 to 264 thousand in 2022/23. The Ohio dairy cattle herd represents approximately 3% of total U.S. inventories, while the cattle inventory represents 1% of total U.S. cattle inventories.
- In 2013/14, turkey production in Ohio totaled 233 million pounds. Production is expected to decline by 1% to 231 million pounds in 2022/23. This accounts for 3% of U.S. turkey production.
- Broiler production is expected to increase 24%, from 405 million pounds in 2013/14 to 501 million in 2022/23. Ohio's broiler production makes up 1% of total U.S. broiler production.



SOY TRANSPORTATION COALITION

FARM TO MARKET: A SOYBEAN'S JOURNEY

Ohio Livestock Inventories and Poultry Production



Source: Informa (Forecast), USDA (History)

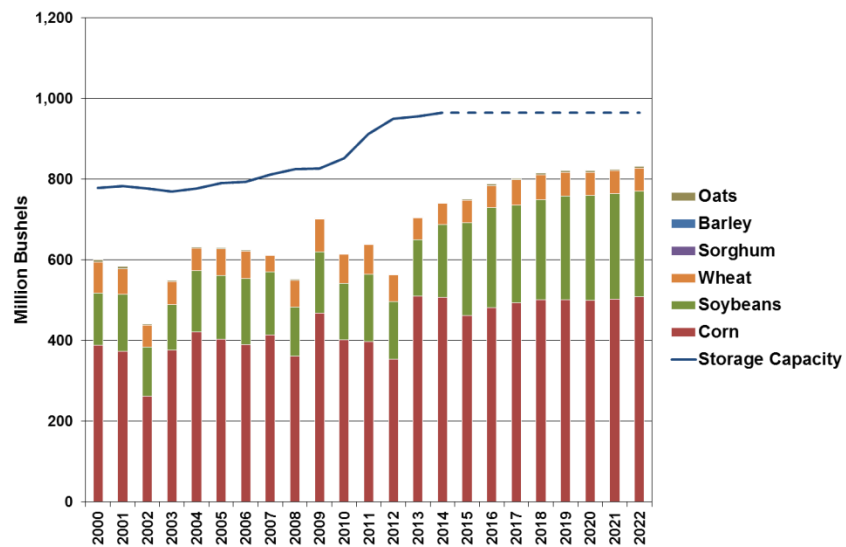


SOY TRANSPORTATION COALITION

FARM TO MARKET: A SOYBEAN'S JOURNEY

Ohio December 1 Crop Storage Capacity and Inventories

Crop Storage Capacity and Inventories



Share of Crop Inventories



"Farm to Market: A Soybean's Journey" can be accessed at www.unitedsoybean.org or www.soytransportation.org

Funded by the Soybean Checkoff

