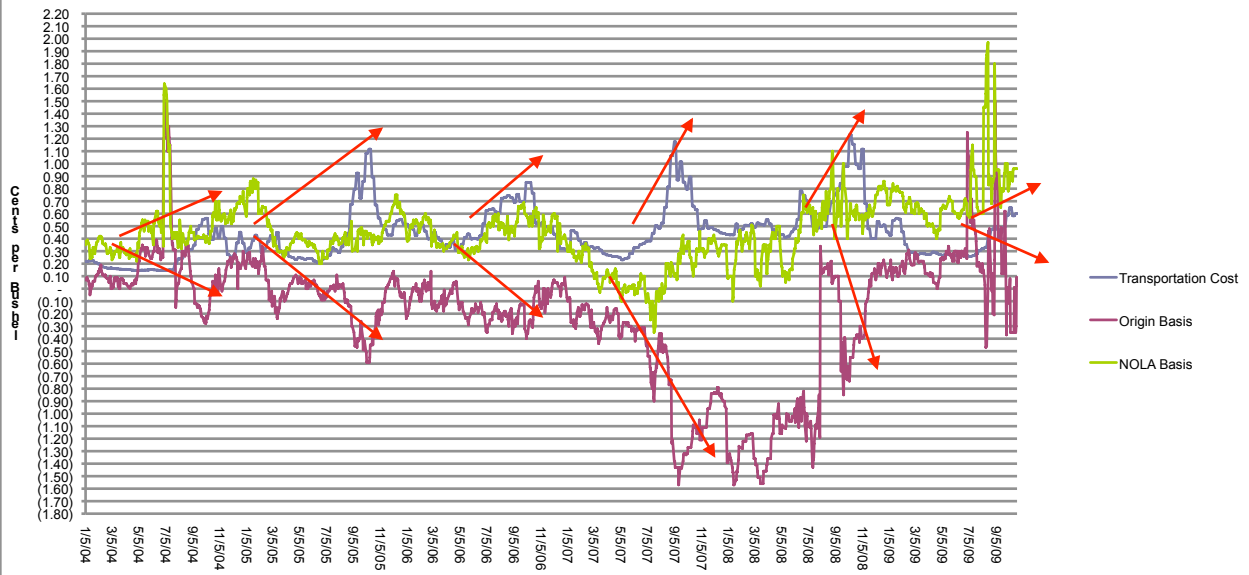


Cincinnati, OH - CGB



Annual Averages			
	Origin Basis	Export Basis	Freight Rate
2009	0.21	0.75	0.37
2008	(0.75)	0.48	0.61
2007	(0.61)	0.15	0.48
2006	(0.12)	0.46	0.51
2005	(0.05)	0.45	0.44
2004	0.16	0.47	0.26

Multi Year Comparison of Local Values			
Total Change		Basis	Freight
From	To	Change	Change
2004	2009	0.04	0.11
2004	2008	(0.91)	0.35
2005	2009	0.26	(0.07)
2005	2008	(0.70)	0.17

Annual	Origin Basis Change	Destination Basis Change	Freight Change C / BU	Aggregate Dest & Frt Change	Origin as % of Aggregate	Origin as % Of FRT Increase	Origin as % Of FRT Decrease
2009	0.95	0.27	(0.24)	0.51	100%		100%
2008	(0.14)	0.33	0.13	0.20	-70%	100%	
2007	(0.49)	(0.30)	(0.04)	(0.27)	100%		-100%
2006	(0.07)	0.01	0.08	(0.07)	100%	93%	
2005	(0.22)	(0.02)	0.18	(0.20)	100%	100%	