

Soy Transportation Coalition

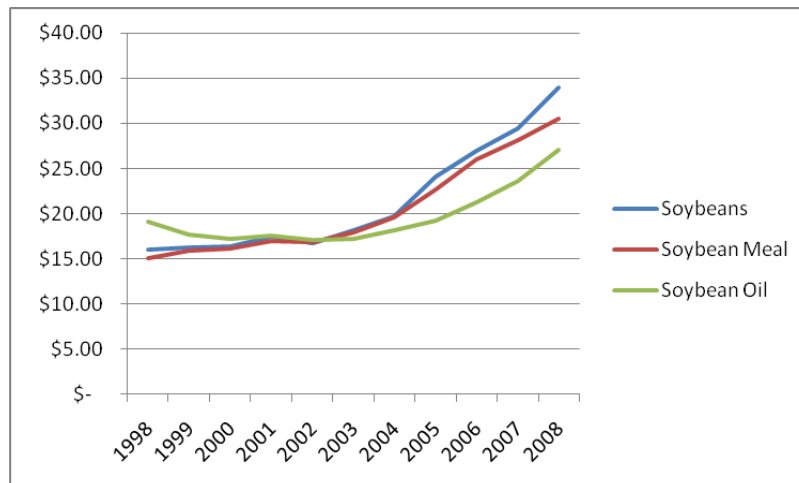
Railroad Movement of Soybeans and Soy Products



Railroad Revenue

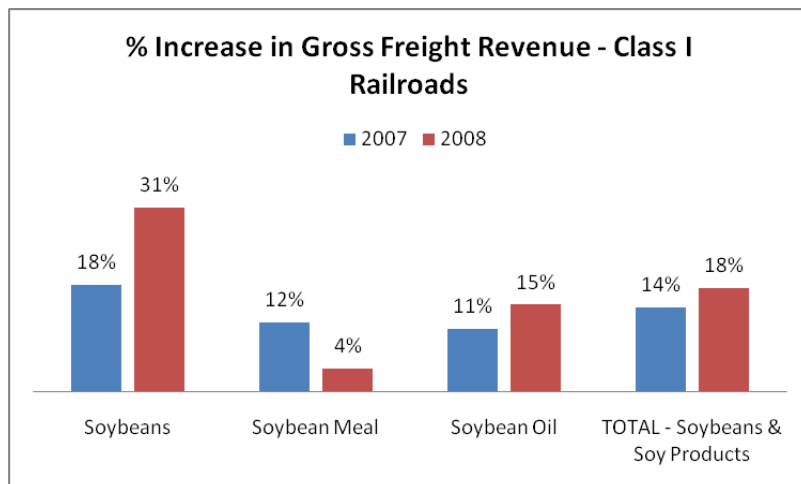
Class I Railroad Revenue (Per Short Ton)

<u>Year</u>	<u>Soybeans</u>	<u>Soybean Meal</u>	<u>Soybean Oil</u>
1998	\$16.03	\$15.04	\$19.14
1999	\$16.32	\$15.84	\$17.64
2000	\$16.36	\$16.09	\$17.16
2001	\$17.48	\$16.91	\$17.58
2002	\$16.74	\$16.84	\$17.08
2003	\$18.18	\$17.92	\$17.17
2004	\$19.73	\$19.60	\$18.15
2005	\$24.15	\$22.69	\$19.27
2006	\$27.01	\$25.99	\$21.23
2007	\$29.52	\$28.10	\$23.66
2008	\$34.00	\$30.51	\$27.09



Total Gross Freight Revenue for Soybeans & Soy Products for Class I Railroads

	<u>2006</u>	<u>2007</u>	<u>2008</u>
Soybeans	\$483,027,779	\$570,535,145	\$749,762,239
Soybean Meal	\$487,500,392	\$544,387,232	\$565,868,411
Soybean Oil	\$149,517,610	\$165,411,233	\$189,761,557
TOTAL	\$1,120,045,781	\$1,280,333,610	\$1,505,392,207



Class I Railroad – a railroad with an operating revenue exceeding \$346.8 million. Currently, seven railroads are considered as Class I: Burlington Northern Santa Fe, CSX Transportation, Kansas City Southern Railway, Norfolk Southern Railway, and Union Pacific Railroad. Canadian National Railway and Canadian Pacific Railway are also considered Class I due to their significant trackage lines in the United States.