



# SOY TRANSPORTATION COALITION

## RURAL INFRASTRUCTURE: A More Productive Path Forward

### Illinois Agricultural Production and Rural Infrastructure

#### Illinois Trends in Agricultural Production and Infrastructure

##### Highlights

- The population in Illinois is nearly double that of Indiana and more than four times as large as that of Iowa (year 2010 population estimates), even though all of these states had agricultural production valued at over \$10 billion in 2010.
- Illinois is a major hub for railroad and has maintained approximately 5% of total U.S. railroad trackage consistently since the 1920's.
- While the value of agricultural production in Illinois increased by 740% from 1950 to 2007, the number of farms decreased by 63%.

##### Production Consumed on Farm

- Home consumption of a farm's production has changed dramatically. In 1950, the value of farm production consumed at home in Illinois was 3.25%.
- In contrast, in 2010 just 0.07% of the value of production in Illinois was consumed at home. This shift amounts to an even greater reliance by agricultural producers on rural infrastructure to transport farm products.

##### Rural Population Trends

- In 1930 there were 1,994,927 people living in Illinois, with 26.1% of that population in rural areas.
- By comparison, in 2010 there were 12,830,632 people living in Illinois, with 11.5% of that population in rural areas.

#### Agricultural Production

	Then			Now			Change
	Year	Quantity	Percentage of U.S.	Year	Quantity	Percentage of U.S.	Percentage Change in Quantity
Consolidation Trends: Number of Farms	1950	203,000	3.6%	2010	76,000	3.5%	-62.6%
Farmland Trends: Land in Farms (Acres)	1950	31,700,000	2.6%	2010	26,700,000	2.9%	-15.8%
Average Farm Size (Acres)	1950	156	73%	2010	351	84%	125%
Population Trends: Population Density (Pop. per Square Mile)	1930	137	394%	2010	231	264%	68.1%
Production Trends: Volume of Production (Million Bushels)	1940	545	11.5%	2011	2,413	13.5%	343%

#### Illinois Agriculture and Rural Infrastructure

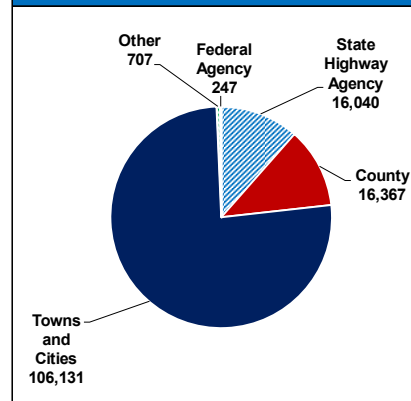
##### Highlights

- Roads** With 139,492 miles of road as of 2008, Illinois accounts for 3.5% of U.S. road miles.
- Railroad** Illinois had 12,188 miles of railroad in 1920 (around the time of the peak rail mileage), but this mileage had fallen to 10,956 miles in 1965 and decreased even further to 7,313 freight railroad miles in 2009.
- Waterways** Illinois has approximately 1,100 miles of inland waterways.
- Bridges** Illinois has 26,436 bridges, and approximately 15.4 percent of those are considered structurally deficient or functionally obsolete.

#### Did you know?

- In Illinois in 2007, there were an average of 244 soybean acres per soybean farm, while for the U.S. the average soybean area per soybean farm was 229 acres.
- Broilers are a major consumer of soybean meal. In 2007, there were 0.33 million broilers sold in Illinois and 8,915 million broilers sold in the U.S.
- Average farm size in the U.S. increased from 213 acres in 1950 to 418 acres in 2010, while average farm size in Illinois increased from 156 acres to 351 acres over the same period.
- In Illinois in 1945, there were 38,470 grain combines, while in 2007 there were 31,841 self-propelled grain and bean combines in the state.

#### Miles of Road by Owner for Illinois





# SOY TRANSPORTATION COALITION

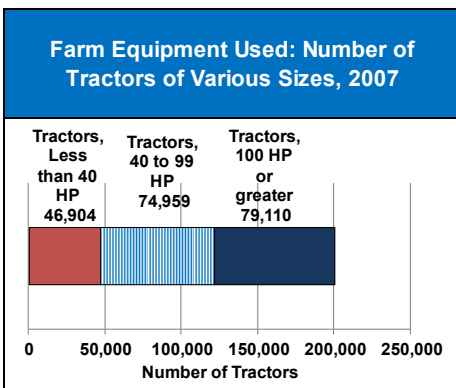
## RURAL INFRASTRUCTURE: A More Productive Path Forward

### Illinois Agricultural Production and Rural Infrastructure

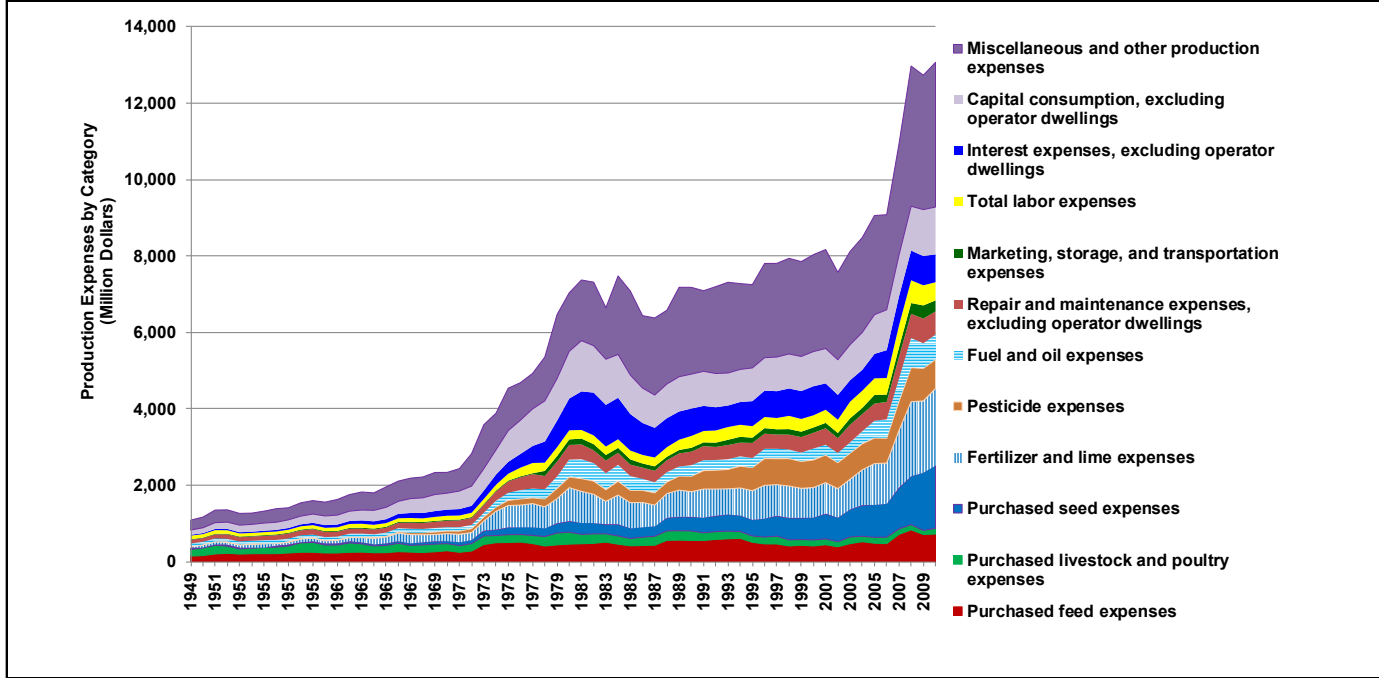
#### Consolidation Trends: Fewer Farms and Larger Average Farm Size

	Then (1954)		Now (2007)		Change	
	Number of Farms	Average acreage or number of head per farm for farms with production	Number of Farms	Average acreage or number of head per farm for farms with production	Percentage Change in No. of Farms	Percentage Change in Avg. Farm Size
Corn for Grain	146,747	58 acres	38,260	342 acres	-74%	493%
Soybeans	88,583	45 acres	33,945	244 acres	-62%	447%
Wheat	60,137	25 acres	9,416	95 acres	-84%	272%
Cattle and Calves Inventory	143,837	27 head	18,397	67 head	-87%	149%
Hogs Sold	100,513	69 head	3,063	4,308 head	-97%	6,153%
Broilers Sold	534	8,099 head	260	1,250 head	-51%	-85%
All Farms	175,543	173 acres	76,860	348 acres	-56%	101%

#### Farm Equipment



#### Farm Input Trends: Illinois Farm Inputs by Type, 1949-2010



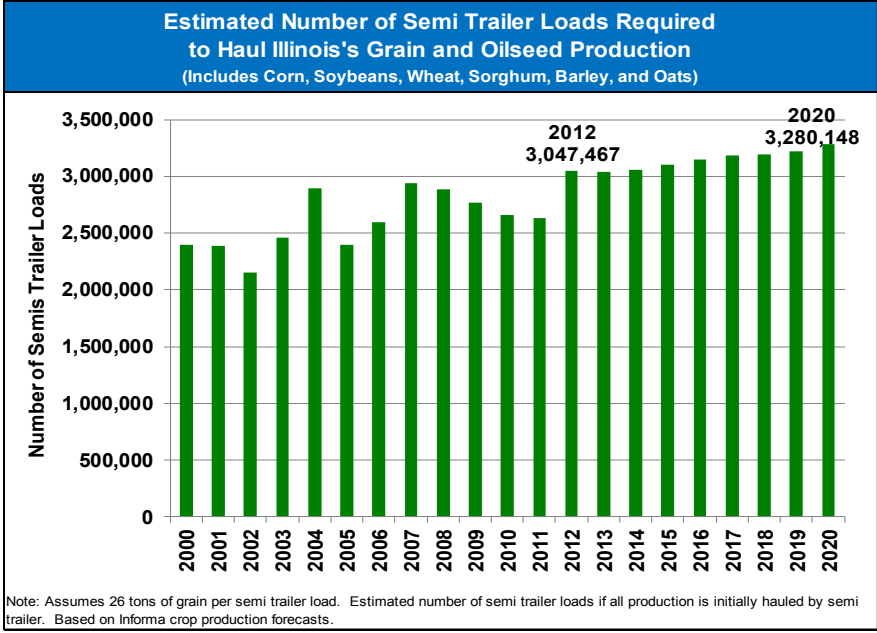


# SOY TRANSPORTATION COALITION

## RURAL INFRASTRUCTURE: A More Productive Path Forward

### Illinois Agricultural Production and Rural Infrastructure

Rural Infrastructure Trends							
	Then			Now			Change
	Year	Quantity	Percentage of U.S.	Year	Quantity	Percentage of U.S.	Percentage Change in Quantity
Off Farm Storage (million bushels)	1986	1,149	12.6%	2011	1,451	14.3%	26%
On Farm Storage (million bushels)	1986	1,322	9.6%	2011	1,460	11.4%	10%
Estimated Average Tractor Weight (lbs.)	1950	5,797	107.5%	2011	11,492	115.3%	98%
Railroad Miles	1920	12,188	4.9%	2009 freight	7,313	5.2%	-40%
Road Miles	1940	11,648	2.1%	2008	139,492	3.5%	1,098%

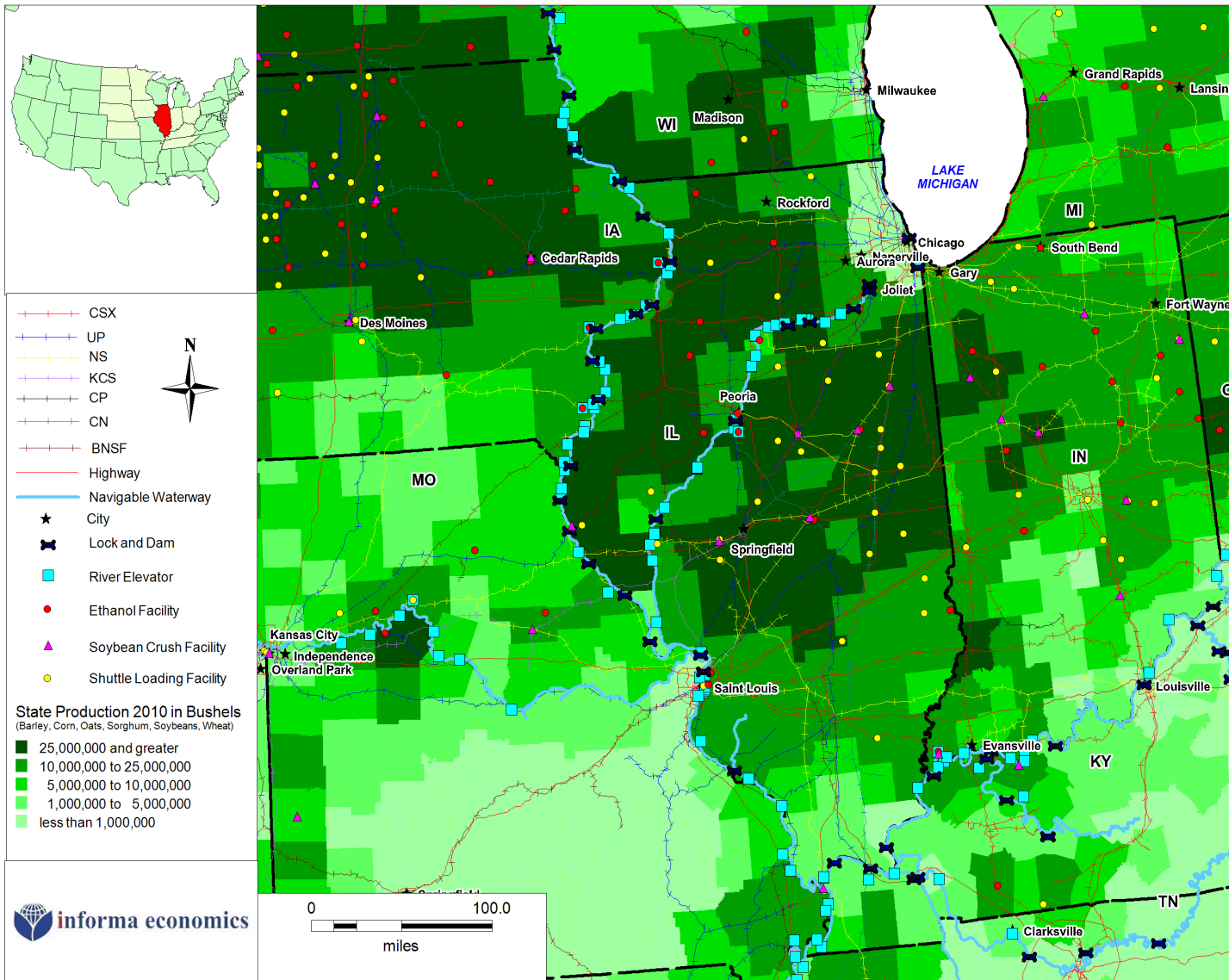




# SOY TRANSPORTATION COALITION

## RURAL INFRASTRUCTURE: A More Productive Path Forward

### Illinois: Agricultural Production and Infrastructure



#### Infrastructure

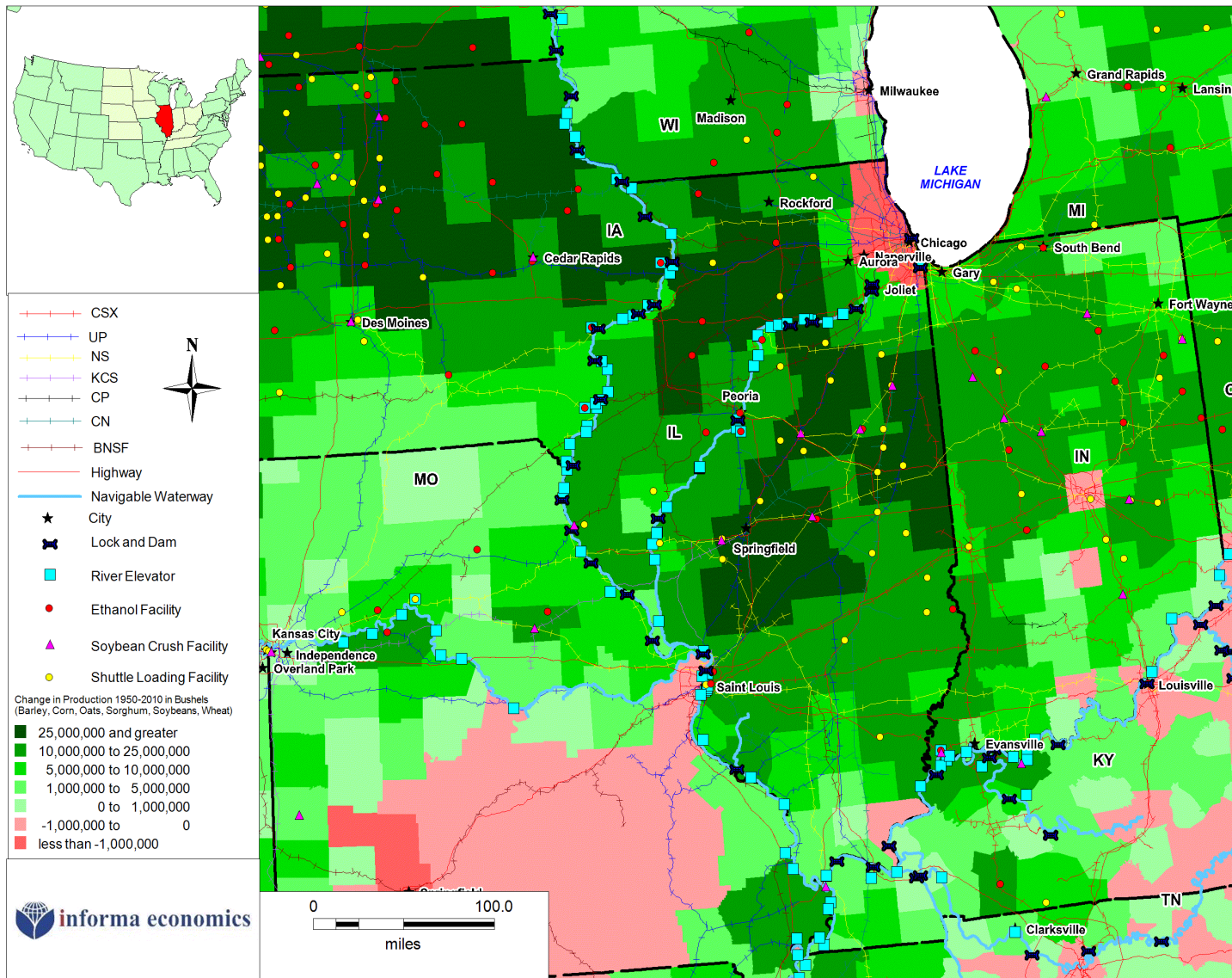
- Illinois crop production consists primarily of corn and soybeans.
- Crops are moved from production regions by truck, rail or barge to elevators and processing facilities.
- Illinois has 2,236 miles of interstate; 7,313 miles of rail lines; 1,100 miles of waterways; 26,436 bridges and 139,492 miles of roadways.
- Illinois has seven soybean crush facilities; 40 shuttle facilities; 14 ethanol plants; 667 grain elevators and 65 river elevators.



# SOY TRANSPORTATION COALITION

## RURAL INFRASTRUCTURE: A More Productive Path Forward

### Illinois: Change in Production from 1950 to 2010



#### Production

- Crop production in the state of Illinois, with exception to the Chicago area, has been growing over the past six decades.
- Production of grains and soybeans has increased by 1.7 billion bushels from 1950 to 2010.
- In the past, Illinois supported a more diverse array of crops including primarily corn, oats, soybeans and wheat.
- Currently, the state focuses much of its production on corn and soybeans, with small amounts of oats, sorghum, and wheat produced within the state.

Funded by the soybean checkoff